

PROJECT  
**Harbour Heights**  
 Condominium Development  
 Port Dover Ontario

TITLE  
**WEST SIDE ELEVATION**  
 APARTMENT BUILDING

STATUS **SITE PLAN APPROVAL**

DRAWN BY **KSR**

DATE **DECEMBER 2000**

REVISED

JOB No. 2000

DATE No. 1 REVISION



These drawings are the sole property of Orchard Design Studio Inc. Any reproduction or use without the written consent of Orchard Design Studio Inc. is strictly prohibited.

OSD is not responsible for errors or omissions in these drawings. The Client/Contractor must verify all dimensions, materials, components and details and report any discrepancies to OSD.



A2.7

Apartment Lower Level Plan

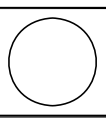


**A2.8**

**PROJECT**  
 Harbour Heights  
 Condominium Development  
 Port Dover Ontario

**TITLE**  
 LOWER LEVEL FLOOR PLAN  
 APARTMENT BUILDING

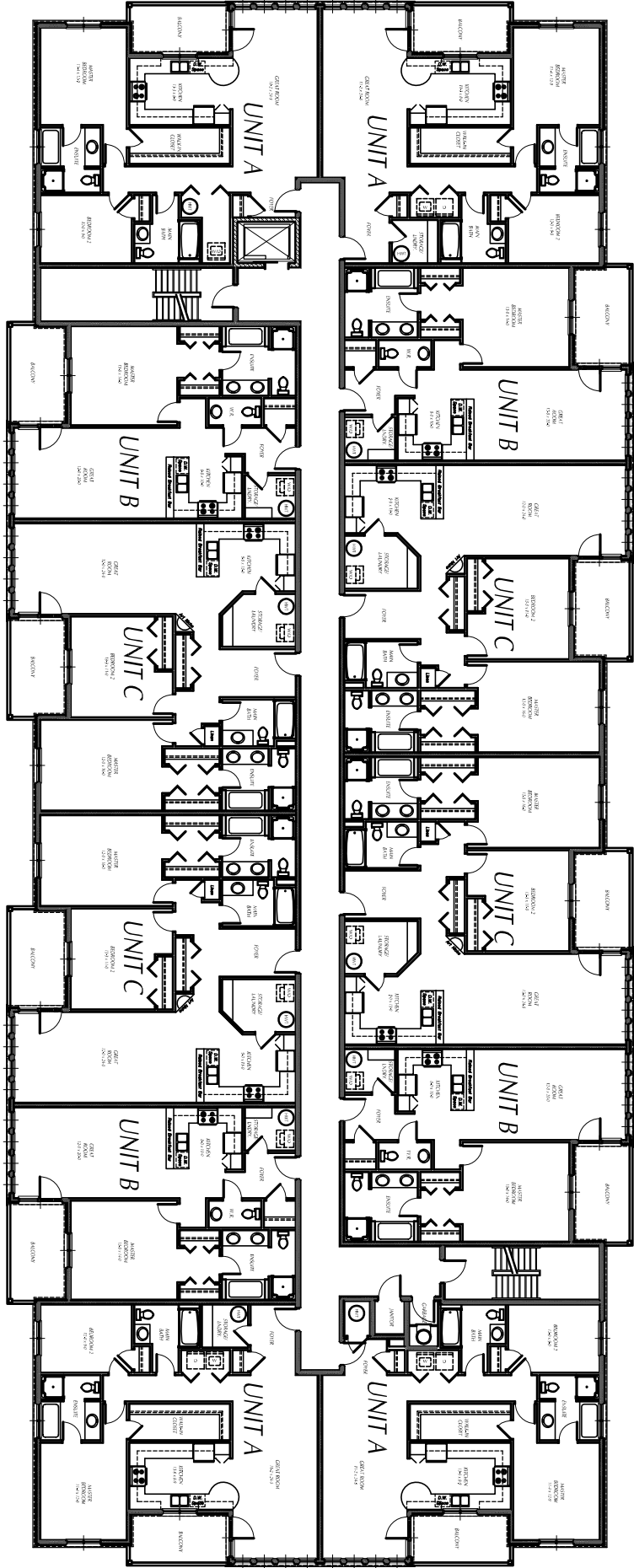
<b>STATUS</b>	SITE PLAN APPROVAL
<b>DESIGNER</b>	PORT DIVER
<b>FILE</b>	04-0000-0000
<b>SCALE</b>	1/8"=1'-0"
<b>DRAWN BY</b>	KSR
<b>DATE</b>	DECEMBER 2000
<b>REVISED</b>	
<b>JOB No.</b>	2000
<b>SHEET No.</b>	1
<b>REVISION</b>	



This drawing is the property of Orchard Design Studio Inc. Any reproduction or use without the written consent of Orchard Design Studio Inc. is strictly prohibited.

OSD is not responsible for errors or omissions in this drawing or construction documents. It is the user's responsibility to verify all dimensions, quantities, materials and notes and report any discrepancies to OSD.

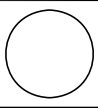
**ORCHARD DESIGN STUDIO INC.**  
 INCORPORATED  
 (519) 620-8414



**PROJECT**  
**A2.9** Harbour Heights  
 Condominium Development  
 Port Dover Ontario

**STATUS** SITE PLAN APPROVAL  
**DESIGNER** POINT CONCEPT  
**FILE** 05-000-000-000  
**SCALE** 1/8"=1'-0"  
**DRAWN BY** KSR  
**DATE** DECEMBER 2000  
**REVISED**  
**JOB No.** 2000

**SHEET** No. 10  
**REVISION**



This drawing is the property of Orchard Design Studio Inc. Any reproduction or use of this drawing without the written consent of Orchard Design Studio Inc. is prohibited.

OSD is not responsible for the accuracy of information used in this drawing. The Client/Owner must verify all information and details and accept full responsibility for the same.



