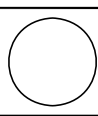
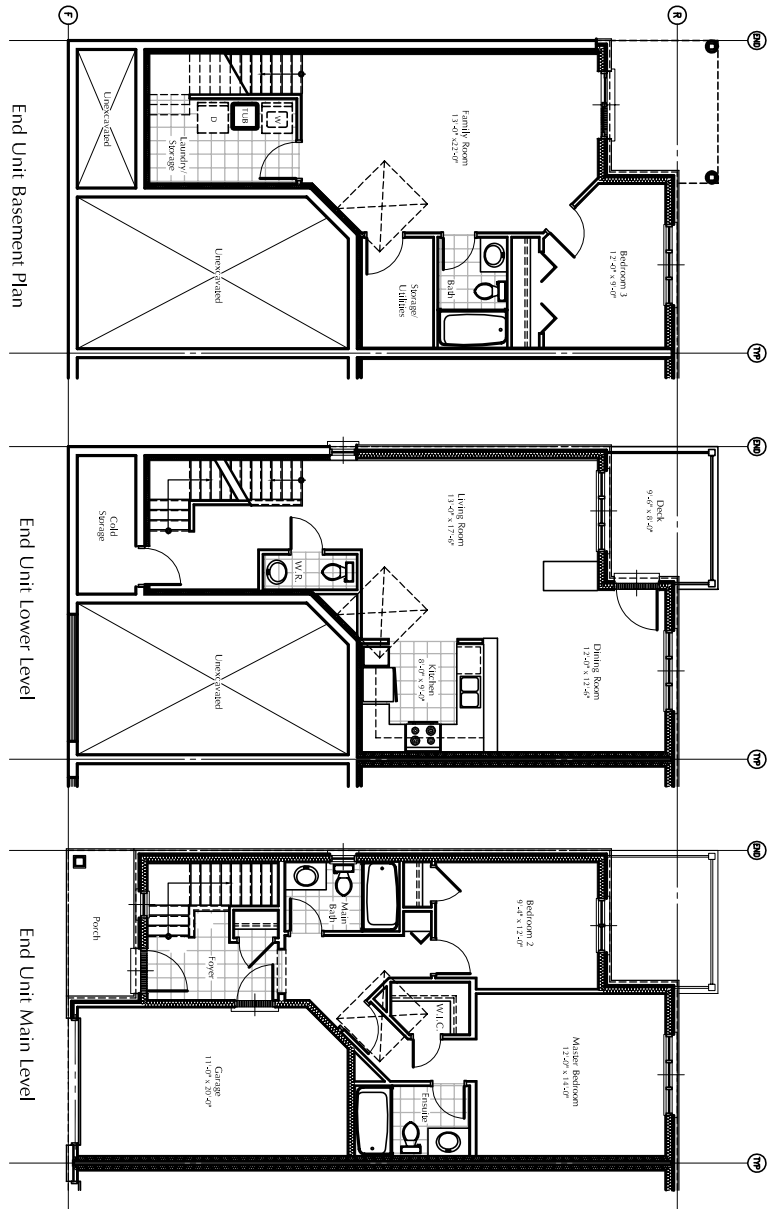


PROJECT
A2.1
 Harbour Heights
 Condominium Development
 Port Dover Ontario

STATUS SITE PLAN APPROVAL
DESIGNER POINT CONCEPTS
FILE 05001 Harbour Heights
SCALE 3/16"=1'-0"
DRAWN BY KSR
DATE DECEMBER 2000
REVISED
JOB No. 2000 **DATE** No. 1 REVISION



These drawings are the property of Orchard Design Studio. Any reproduction or use without the written consent of Orchard Design Studio is strictly prohibited.
 ODS is not responsible for errors or omissions that may appear in these drawings. The Client/Contractor must verify all dimensions, materials, components and details and report any discrepancies to ODS.
ORCHARD DESIGN STUDIO
 INCORPORATED
 (519) 620-0414



End Unit Basement Plan

End Unit Lower Level

End Unit Main Level

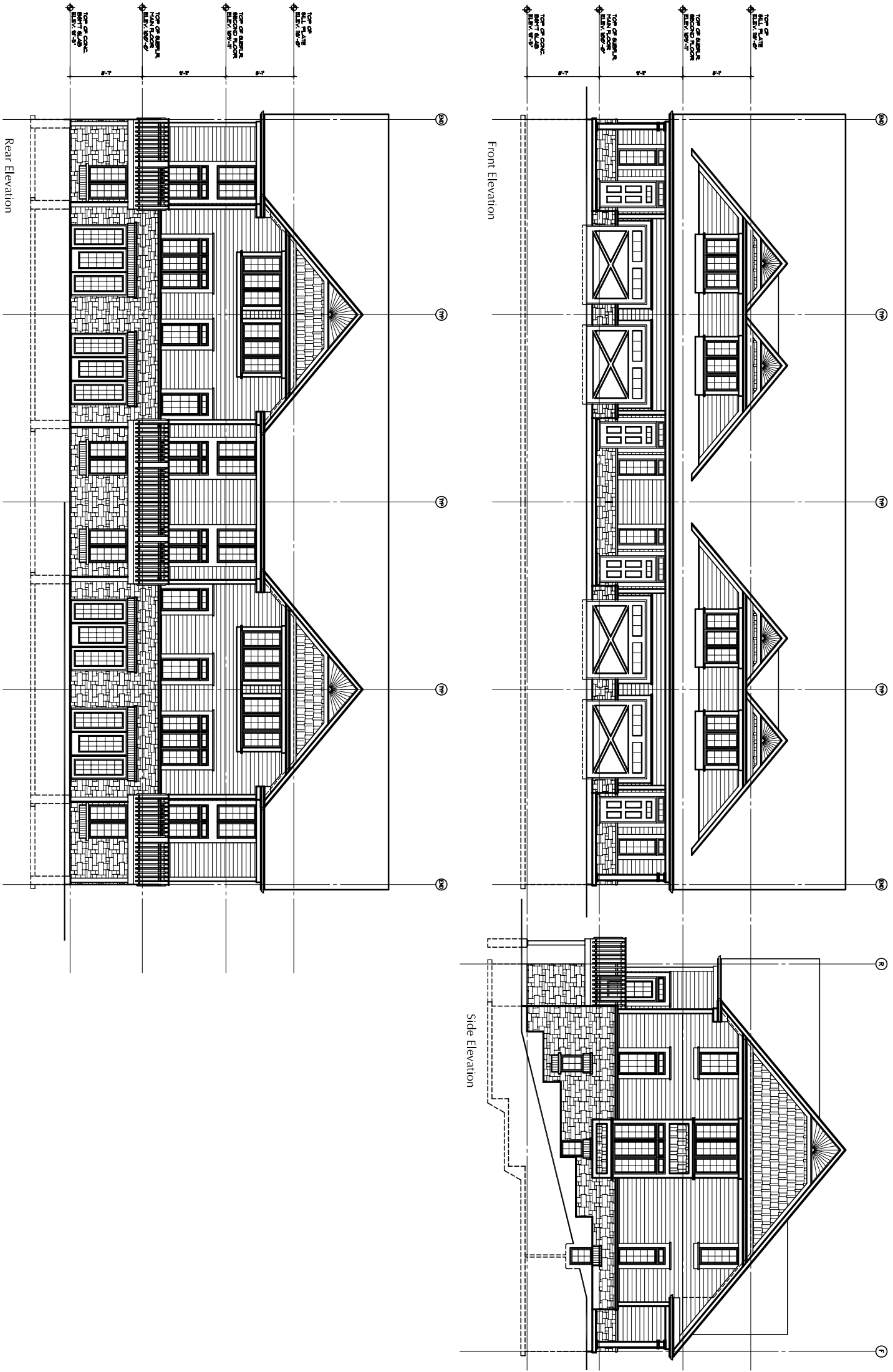
	PROJECT: Harbour Heights Condominium Development Port Dover Ontario	STATUS: SITE PLAN APPROVAL PREPARED BY: PONT BOWEN FILE: 04011-1000-000-000 SCALE: 3/16"=1'-0" DRAWN BY: KSR DATE: DECEMBER 2000 REVISIONS:	SHEET No. 1 REVISION
	TITLE: FLOOR PLANS BLOCK A	JOB No. 2000	DATE:
	DRAWN BY:	CHECKED BY:	DATE:
	DESIGNED BY:	APPROVED BY:	DATE:
	PROJECT NO.:	SHEET NO.:	DATE:

These drawings are the property of Orchard Studio Inc. Any reproduction or use of these drawings without the written consent of Orchard Studio Inc. is prohibited.

OSI is not responsible for the accuracy of information used in these drawings. The Client/Contractor must verify all dimensions and details and report any discrepancies to OSI.

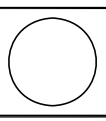
ORCHARD STUDIO INC. INCORPORATED (519) 620-0414

A2.2



PROJECT
A2.3
Harbour Heights
Condominium Development
 Port Dover Ontario

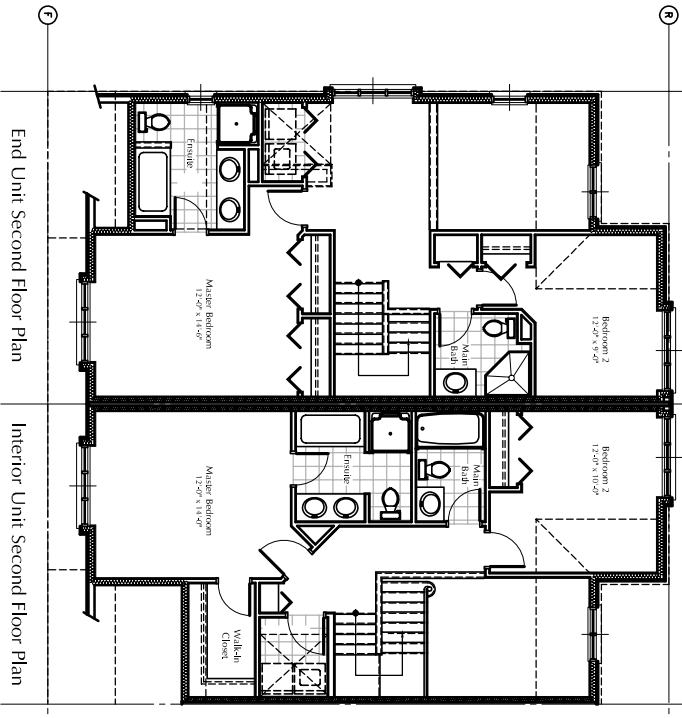
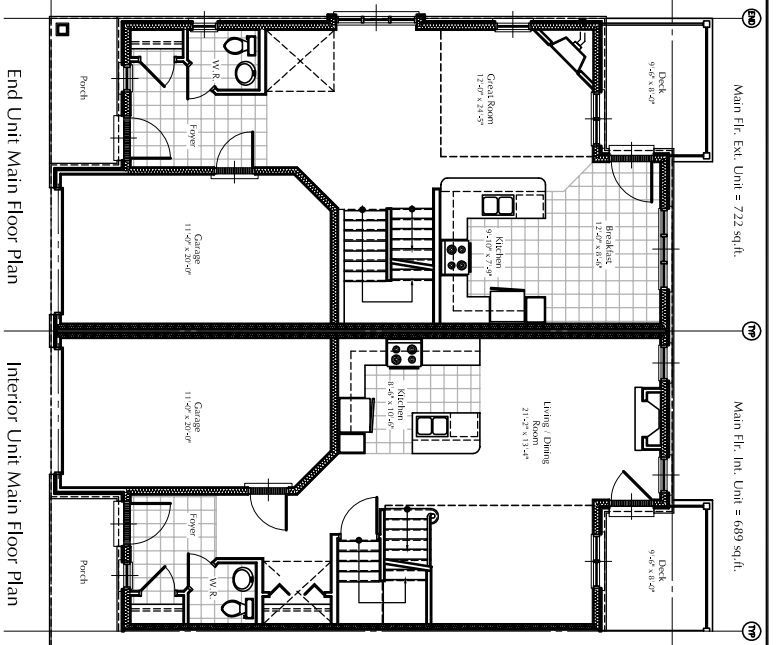
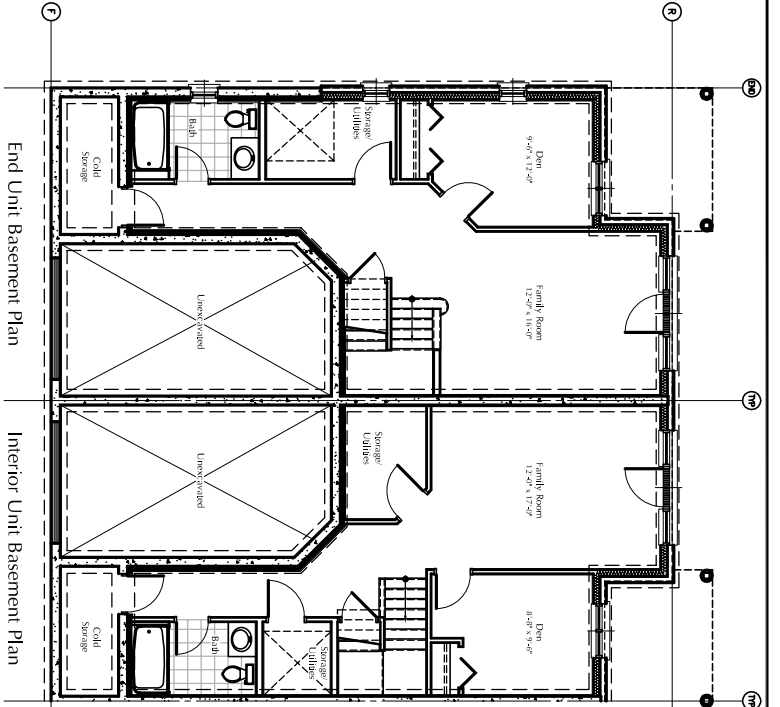
STATUS	SITE PLAN APPROVAL
DESIGNER	POINT CONCEPTS
FILE	point_harbour.dwg
SCALE	3/16"=1'-0"
DRAWN BY	KSR
DATE	DECEMBER 2000
REVISED	
JOB No.	2000
DATE	No. 1 REVISION



These drawings are the sole property of Point Concepts Studio. Any reproduction or use without the written consent of Point Concepts Studio is strictly prohibited.

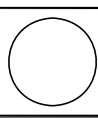
OSR is not responsible for errors or omissions in these drawings. The user of these drawings must verify all dimensions, materials, quantities and details and accept any responsibility for the same.

ORCHARD
 D E S I G N
 STUDIO
 INCORPORATED
 (519) 620-0814



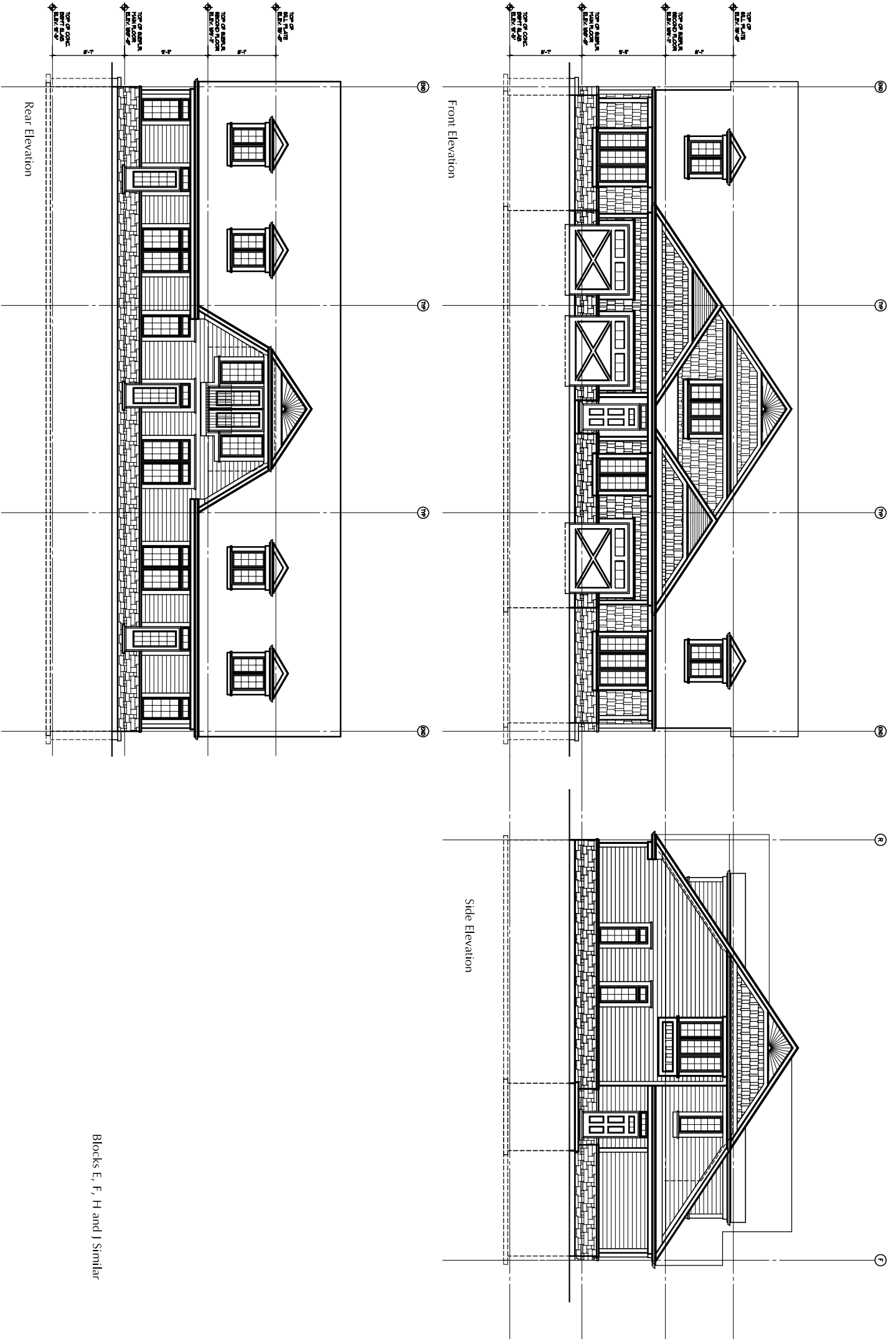
PROJECT
A2.4
 Harbour Heights
 Condominium Development
 Port Dover Ontario

DESIGNER	STUBBS SITE PLAN APPROVAL
CLIENT	PONTI GROUP
FILE	small housing-05
SCALE	3/16"=1'-0"
DRAWN BY	KSR
DATE	DECEMBER 2000
REVISED	
JOB No.	2000
DATE	No. 1 REVISION



Notwithstanding to whomsoever, the Designer shall be responsible for the accuracy of the information provided in the drawings and shall be liable for any errors or omissions. The Designer shall not be responsible for any errors or omissions in the drawings or information provided by the Client. The Client shall be responsible for the accuracy of the information provided by the Client. The Designer shall not be responsible for any errors or omissions in the drawings or information provided by the Client. The Client shall be responsible for the accuracy of the information provided by the Client.

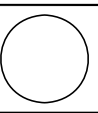
ORCHARD
 DESIGN STUDIO
 INCORPORATED
 (519) 620-8414



Blocks E, F, H and J Similar

PROJECT
A2.5
 Harbour Heights
 Condominium Development
 Port Dover Ontario

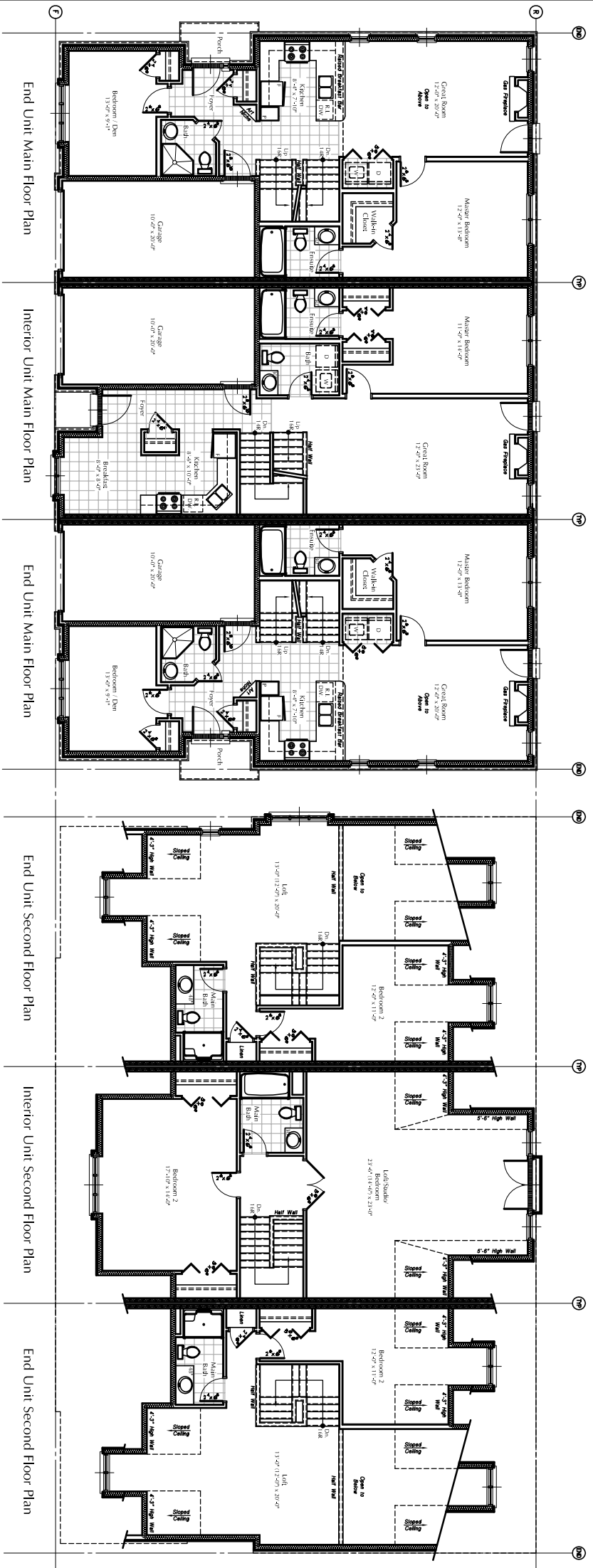
STATUS	SITE PLAN APPROVAL
OWNER	PORT DOWER
FILE	1000-1000-000
SCALE	3/16"=1'-0"
DRAWN BY	KSR
DATE	DECEMBER 2000
REVISED	
JOB No.	2000
DATE	No. 1 REVISION



This drawing was prepared in accordance with the Ontario Building Code (OBC). Any reproduction of this drawing without the written consent of the author is strictly prohibited.

OSR is not responsible for errors or omissions in this drawing. It is the user's responsibility to verify all dimensions and details and report any discrepancies to OSR.

T
 INCORPORATED
 (519) 620-0814



End Unit Main Floor Plan

Interior Unit Main Floor Plan

End Unit Main Floor Plan

End Unit Second Floor Plan

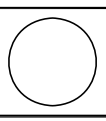
Interior Unit Second Floor Plan

End Unit Second Floor Plan

PROJECT
Harbour Heights
Condominium Development
 Port Dover Ontario

TITLE
FLOOR PLANS
BLOCKS D, E, F, H, J

STATUS	SITE PLAN APPROVAL
DESIGNER	POINT CONCEPT
FILE	High Rise-100-100
SCALE	3/16"=1'-0"
DRAWN BY	KSR
DATE	DECEMBER 2000
REVISED	
JOB NO.	2000



These drawings are the property of Orchard Design Studio Inc. and shall remain the property of Orchard Design Studio Inc. Any reproduction or use of these drawings without the written consent of Orchard Design Studio Inc. is strictly prohibited.

OSD is not responsible for the accuracy of information used in these drawings. The user of these drawings shall be responsible for the accuracy of the information used in these drawings. The user of these drawings shall be responsible for the accuracy of the information used in these drawings.

ORCHARD DESIGN STUDIO INC.
 INCORPORATED
 (519) 620-0414